



Fazlani Aishabai Trust
education. health. empowerment.

20
24
-
25

**FAZLANI AISHABAI & HAJI ABDUL
LATIF CHARITABLE TRUST**

ANNUAL REPORT

**FAZLANI COMMUNITY
SCHOOLS' PROGRAMME**

☎ 022- 2373- 5954

✉ contact@aishabaitrust.com

🌐 <https://www.aishabaitrust.com>

Table of CONTENTS

02	About the Trust	12	Competitive Edge
03	About FCSP	13	Student Council
04	Student's Strength	14	Individual Career Plan (ICP)
05	Learning Enhancement Program	15	Alumni
06	English Language Development	16	Parenting Programme
07	Night Study Centre	17	Recruitment & Selection
08	Art	18	M&E: Feedback Mechanism
09	Information Communication & Technology (ICT)	19	M&E: Learning & Development
10	Social Media Outreach	20	Strategic Collaboration
11	Sports & Physical Education	21	Internal Collaborations

About Fazlani Aishabai & Haji Abdul Latif Charitable Trust

A Legacy of Service and Empowerment

Since its inception in 1980, the Fazlani Aishabai & Haji Abdul Latif Charitable Trust has dedicated itself wholeheartedly to the service of humanity. With a strong commitment to improving lives, the Trust has strived to create opportunities for those in need, with a focus on uplifting individuals and communities from marginalized and underprivileged backgrounds.

Vision

To work towards creating a better and equal society where there is education, health, and empowerment to all.

The Trust envisions a society where every individual has equal access to essential resources, including quality education and healthcare. It strives to foster empowerment across all communities, ensuring that everyone, regardless of their background, has the opportunity to thrive and contribute to the greater good.

Mission

To promote the education of the weaker sections of society and to provide medical aid to the needy.

The Trust is dedicated to supporting marginalized communities by enhancing access to education for underprivileged individuals and providing vital medical assistance to those in dire need. Through these efforts, it aims to uplift lives and create opportunities for a healthier, more prosperous future for all.

FCSP

Vision

Empower lives through quality education, leading to the development of future change makers.

Mission

To empower learners, accomplish their individual goals in life, care for others and help to promote goodness, peace, and harmony in society.

Since

1980

About Us

The School Support Program has been one of the first and most cherished projects of the Trust and it derives a lot of satisfaction from its contribution to the MCGM in bringing about quality education to the students belonging to the under-privileged sections of the society.



Total No of Schools:

06

At Fazlani Community Schools' Programme (FCSP), education is designed to nurture well-rounded individuals by blending academic excellence with personal, social, and ethical development. The curriculum goes beyond traditional learning, integrating subjects like Value Education, Art, and Physical Education to foster creativity, emotional intelligence, and physical well-being. A key feature of FCSP is its Individual Career Program (ICP), which provides structured career guidance and skill-building opportunities, helping learners make informed decisions about their future.

The school prioritizes individualized student support, conducting regular home visits and daily absenteeism follow-ups to ensure that every learner receives the attention and encouragement needed to succeed. Active parental involvement through orientation sessions and consistent communication strengthens the home-school partnership, creating a supportive learning environment.

Teaching at FCSP is student-centered and interactive, moving away from rote learning to emphasize critical thinking, collaboration, and the integration of technology in classrooms. Co-curricular activities such as community service, sports, and the arts are seamlessly woven into the academic schedule, ensuring a balanced approach to learning.

Beyond academics, FCSP instills a strong sense of values and social responsibility, encouraging learners to engage in ethical decision-making and community initiatives. The school also invests in professional development for educators, ensuring that teachers continuously refine their skills through workshops and training programs. With its progressive and inclusive approach, FCSP is shaping future-ready learners equipped with knowledge, skills, and a strong moral foundation.

SCHOOL STRENGTH

The admission process for the new academic year commenced in mid-February with widespread announcements shared across various platforms. A structured system was followed to ensure fair allotment of seats, especially in high-demand schools

Total Inquiries: 2969

Total Admissions: 2627



No. of Staff Members

180

No. of Learners Impacted

3067+

No. of Families Reached

2500+

No of Schools

6



LEARNING ENHANCEMENT PROGRAMME

The Learning Enhancement Program (LEP) is a focused initiative to bridge learning gaps and help learners reach grade-level proficiency through targeted support in literacy and numeracy.



- * Bridge foundational learning gaps in literacy and numeracy.
- * Help learners reach grade-level proficiency.
- * Provide level-based, targeted academic support.
- * Offer individualized interventions for learners with diverse needs.
- * Strengthen classroom engagement and long-term academic success.

No. of Learners
Identified (Literacy)

576

No. of Learners at
par (Literacy)

133+

No. of Learners
Identified (Numeracy)

533

No. of Learners at
par (Numeracy)

184+



The remedial program is designed to support learners who face challenges in understanding core concepts. Conducted either before or after school hours based on the grade level, these sessions are held in small groups of 4–5 learners and are facilitated by subject-specific teachers. The focus is on revisiting foundational concepts to strengthen understanding. Separate books are maintained for remedial work, and progress is closely monitored by counsellors or educators. Once clarity is achieved, learners can exit the program but may rejoin if further difficulties arise.

**Personalised support, Interactive
TLMs, Assessments**

ELD

(English Language Development)

English language proficiency continues to be an area of concern throughout, affecting both academic performance and learner confidence. To address this, we have introduced an English Language Development (ELD) initiative focused on enhancing spoken and written English skills in a structured and engaging manner. This initiative is designed to support learners both during school hours and beyond, through carefully curated activities and assignments that promote language acquisition and fluency.

80%

Learners actively participate, showed enthusiasm and improved comprehension.

60%

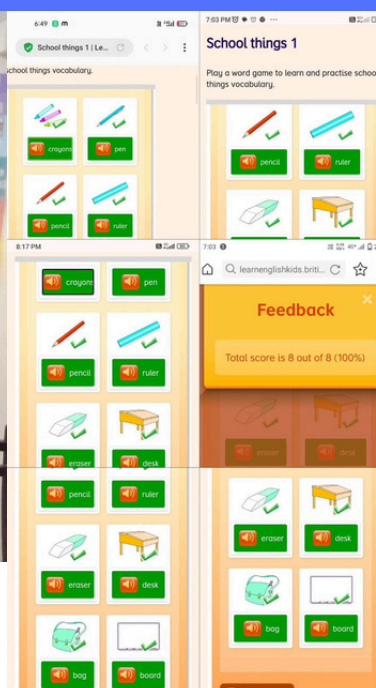
Learners exhibit greater confidence in conversations and sentence formation.

40%

Parents report noticeable improvement in their child's English skills.

Key Outlines

- Launched in AY 2024-25
- Aims to enhance spoken English & boost confidence
- Implemented through a structured curriculum, interactive sessions, exposure events & clubs



Night Study Centre



Bridging Gaps in Learning Support

Addresses challenges like lack of study space, resources, and academic guidance.

Consistent Evening Study Support

Held every evening from 6 - 8 PM, offering a structured learning environment.

Guided Learning with Committed Mentors

Provide focused academic support with dedicated volunteers and leadership team.

Fostering Discipline and Academic Independence

Encourage discipline, independent learning, and academic growth.

Impact



Total no of Learners Supported

45+



No. of Volunteers

9+

Art

Art as a school subject plays a crucial role in nurturing creativity, self-expression, and critical thinking among students. It helps build their confidence, enhances communication skills, and fosters empathy by introducing them to diverse cultures and viewpoints. Studying art also improves focus, discipline, and emotional development, contributing to a more balanced and holistic education. By developing both the intellectual and imaginative sides of learners, art significantly supports their overall growth and prepares them for life beyond the classroom.

Achievements



Literary Arts

Drawing Grade Exam (DGE)
12 Schools registered
7 Schools Enrolled
DGE Centre : JR MPS

200

Overall Learners appeared

67.85%

Passed Elementary Exam

64.28%

Passed Intermediate Exam



Social Emotional Learning

Saturday Art Class (SArC)

1200+

Learners fostered creativity and social-emotional growth

30

Educators trained on SEL through visual arts



Performing Arts

Art to Connect

13

No. of Learners participated

9

Learners won National Level Award

11

Educators impacted

Information Communication & Technology (ICT)

Building Digital Foundations for Future-Ready Learners

As part of FCSP 2024–25, ICT has been introduced to build digital literacy and spark innovation among learners across all grades. With dedicated computer labs in select schools, learners are exploring robotics, assembling computer hardware, and creating interactive games using Scratch. The integration of CS First is helping young minds take their first steps into the world of coding, encouraging creativity, problem-solving, and a deeper understanding of technology.



ICT Curricula

Introducing Scratch through CS first through Orienting learners to coding.

Introducing ICT in FCSP 2024-25 for Empowering Learning Through Technology

Introducing Robotics in FCSP 2024-25 for Shaping Future Innovators

ICT Lab Development & Maintenance

Computer labs maintained in 3/6 schools

1600+
Learners

Enhanced digital literacy across all grades

292+
Learners

Received hands-on experience of robotics & creative expressions

80+
Learners

Made small games using Scratch Programming

164+
Learners

Explored computer hardware where learners assembled computer parts

SOCIAL MEDIA OUTREACH

Social media serves as a dynamic platform to recognize the efforts and achievements of our learners, staff, and collaborators. It helps build awareness around our initiatives, communicates our journey and impact to donors and well-wishers, and acts as a living repository of stories that reflect our growth and progress. Through consistent and thoughtful sharing, we aim to celebrate milestones, amplify voices, and foster meaningful engagement with our extended community.



1369
Followers



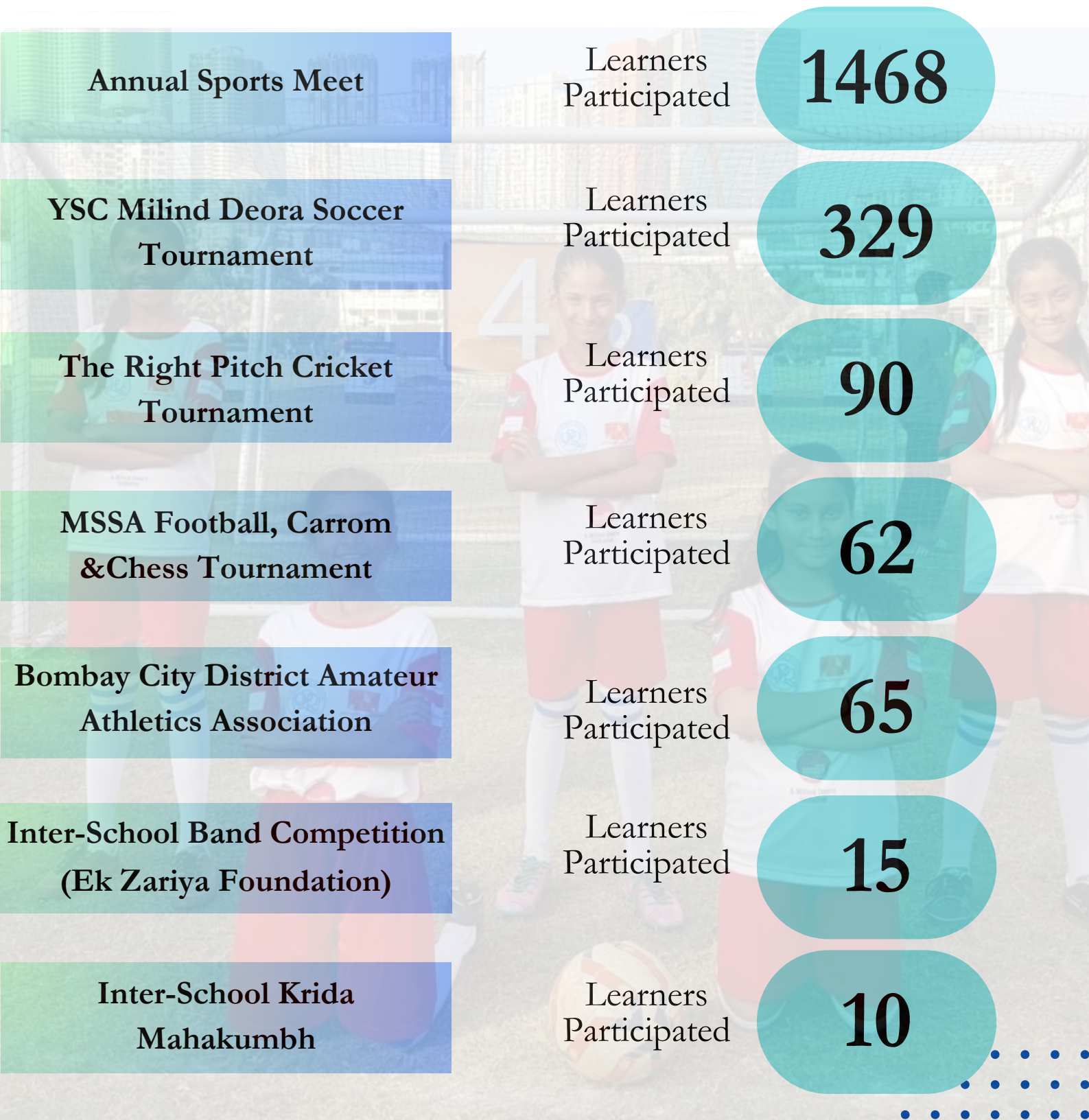
292



41

Sports & Physical Education

Sports and Physical Education (PE) support the overall development of learners by promoting health, fitness, and teamwork. PE builds lifelong habits of physical activity, encourages discipline and resilience, and fosters social connection through movement and play.



Competitive Edge

To provide holistic education, it is essential to identify learners' interests and skills. Competitive exams offer exposure beyond the classroom, helping learners explore their potential and discover their strengths.

752

Learners exposed to Competitive Edge



Inter-School Craft Competition (JIMPS)



Inter-School Band Competition- Ek Zariya Foundation - (JRMPS)



Inter-School MCGM Parade Competition (JIMPS)

Student Council

The Student Council is a team of elected learners who represent their peers and work with teachers to support school activities, build leadership, and promote responsibility. It acts as a link between learners and staff, encouraging active participation in school life.

Role of the Student Council

20%

Learners assist in academic and administrative functions

60%

Learners are involved in event planning and school activity management.

182+

Learners enriched



ICP (Individual Career Plan)

The Individualized Career Plan (ICP) Programme is designed to provide learners with personalized career guidance based on their skill set, including aptitude, interests, personality, strengths, and weaknesses.

Unlike a linear step-by-step process, ICP modules run in parallel, allowing for a more holistic career exploration journey. At the end of the program, each learner receives a detailed career report tailored to their unique profile.

5

Schools

500+

Learners

Key Statistics

100+

Career Counselling &
Assignments

10+

Career Talks

30+

Sessions on Skill Building
across Schools

90+

Parent - Counsellor
Meeting

Voices from INDIVIDUAL CAREER PLAN



“Because of ICP where Counsellors conducted tests such as SWOT Analysis and Aptitude tests, I found out where my interest lies!”

- Khadija (Alumni of JR MPS)

Alumni: Lifelong Connections, Continued Impact



Our alumni are more than former learners—they are Ambassadors of Change, carrying forward the values, skills, and experiences nurtured during their time at school. With a network rooted in mentorship, growth, and active engagement, we continue to support and celebrate their journeys beyond the classroom. From creating career opportunities to fostering lifelong connections, the alumni network remains a vital part of our learning community.



440 learners and counting—each one leaving a mark, each one continuing the story as:

Ambassadors of Change

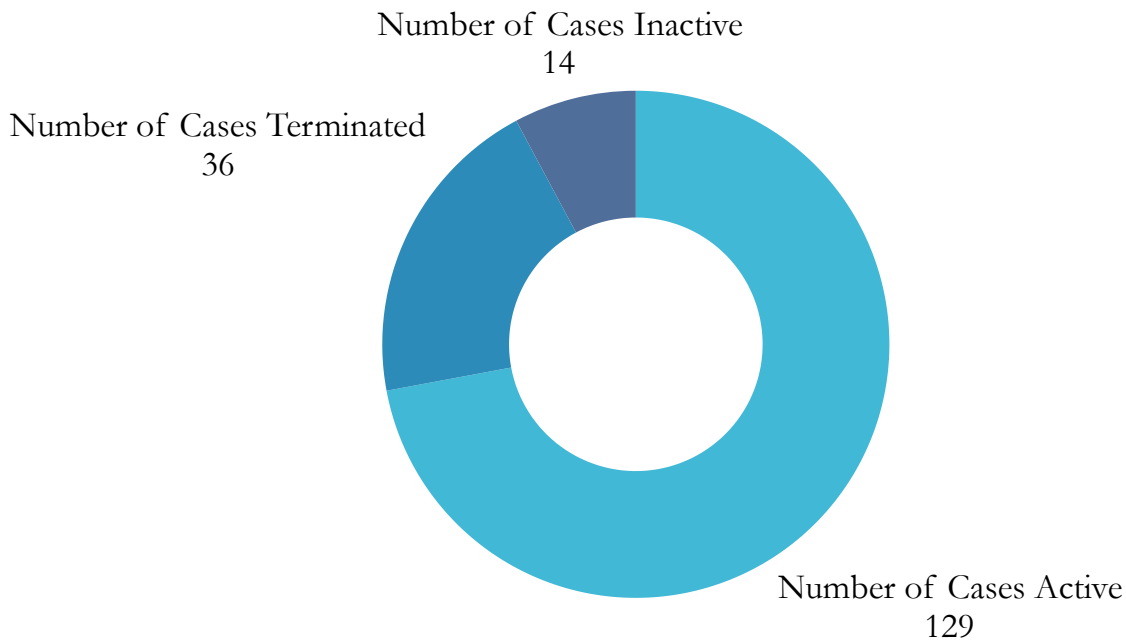
Lifelong Connections & Career Opportunities- Anjuman I Islam Computer Centre.

Mentorship & Growth

Active Engagement



Parenting Programme



**Total No. of
Orientations
Conducted:**

746



PARENTING PROGRAMME

44

Total Parents
Engaged

04

Total no of schools
covered

16

Total no of sessions
conducted

ICP PROGRAMME

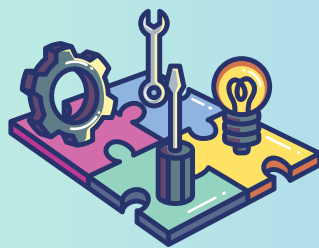


30+

Sessions on Skill
Building across
Schools

500+

Learners Reached
across 5 Schools



20+

Parent-Counsellor
Meetings

100+

Career Counselling
& Assignments



Recruitment & Selection

Our recruitment and selection process is designed to attract dynamic, young talent - particularly at the college level—who are eager to grow and make a meaningful impact. The policy focuses on identifying individuals who align with our organizational values and equipping them with the skills required to succeed through structured onboarding and tailored training.

From vacancy announcements and outreach to onboarding and induction, the recruitment journey includes key stages such as resume screening, candidate evaluations through interviews and demo sessions, and interactive HR engagements. Each step ensures a fair, transparent, and thorough selection process, fostering long-term career development and team alignment.



**Candidates
Screened
(AY 2020-25)**

**Candidates
Selected**

**Current
Staff**

11,202

502

204

M&E: Feedback Mechanism

The M&E Mentoring initiative, launched in Academic Year 2024–25, is a focused support system designed to strengthen instructional quality through continuous monitoring, coaching, and feedback. It follows a layered observation model that includes both deliberate and surprise classroom visits by Coordinators, alongside observations and feedback from School Leaders.

Through a structured Classroom Observation Process, areas such as lesson planning, classroom dynamics, and management strategies are assessed. These insights inform tailored strategies, including demo sessions and one-on-one guidance, to address problem areas effectively.

Regular feedback sessions with School Leaders and Coordinators ensure accountability and track progress, leading to case closures once improvement is evident.

12 cases mentored
7 cases successfully closed



M&E: Learning & Development

To foster internal capacity building and leadership development, the organization designed a structured pathway to the cohort. This began with team members filling out the Cohort 1 application form, followed by a SWOT analysis to identify individual strengths and areas of improvement. Participants then engaged in real-world, application-based projects aimed at enhancing 21st-century skills and completed two key assignments—Art 2 Connect and Echoes of Expression. As a result, 7 out of 10 team members successfully qualified with a 70% success rate. In parallel, the team collaborated with leading organizations to strengthen leadership skills: over 25 teachers were trained and certified through the FIRKI Teacher Leader Development Program, more than 8 school leaders completed the FIRKI School Leader Development Program, and 6+ members of the leadership team were equipped with training under The Unifly Collective's Rehnuma School Leadership Program.

Impact



15+ Leaders
Developed



185+ Learners
Transformed



12+ Teachers
Mentored



250+ Teachers
Trained

Strategic Collaborations



50+

TEACHERS TRAINED &
DEVELOPED

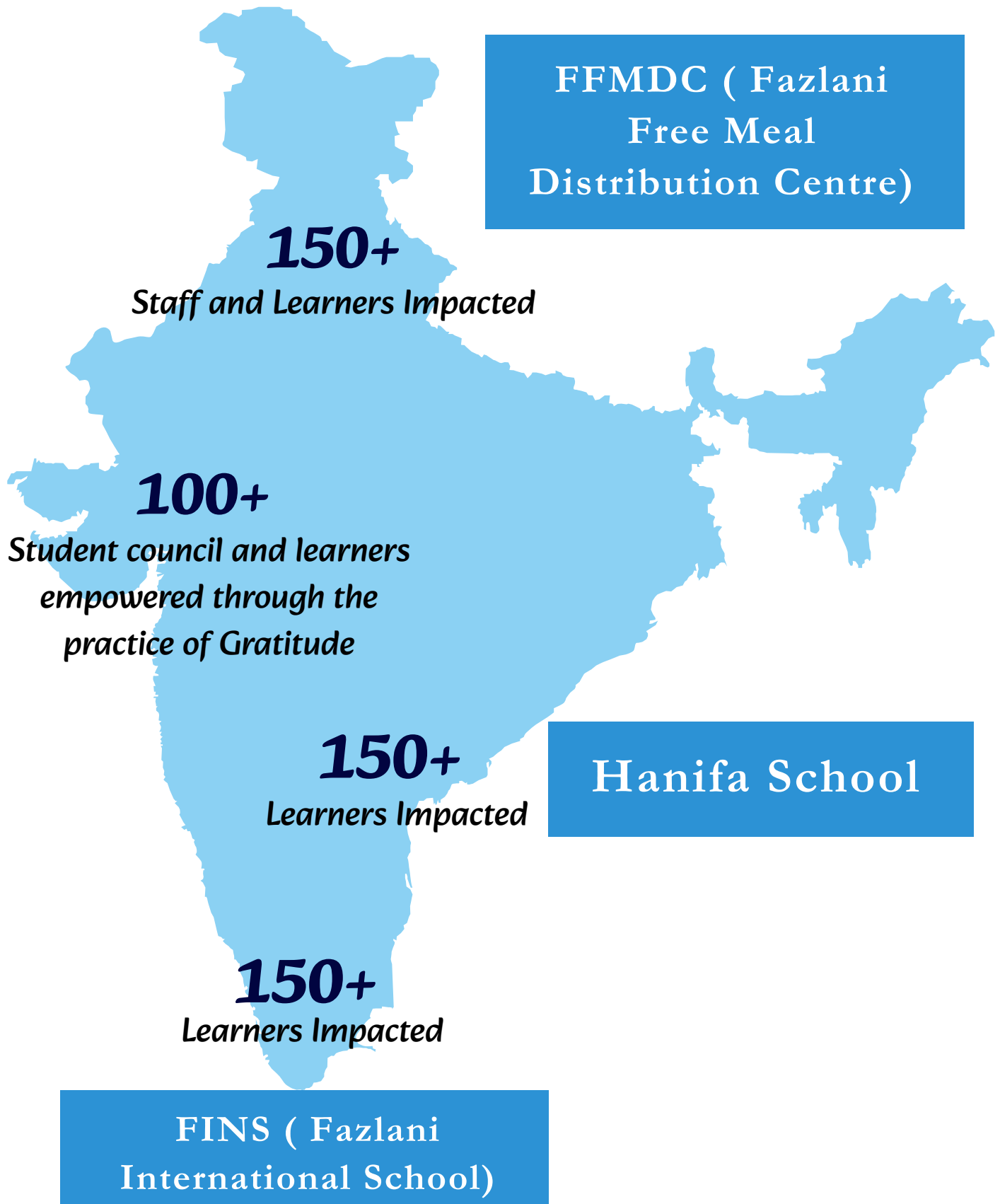
1000+

LEARNERS IMPACTED

10+

TEAM MEMBERS DEVELOPED
IN LEADERSHIP

Internal Collaborations



★ Fazlani Community Schools' Programme ★

Thank You

Contact Us



91+ 77380 24819



www. aishabatrust.com



basharat@aishabaitrust.com



JJ Hospital, Gate no 14, Mumbai - 400003

